

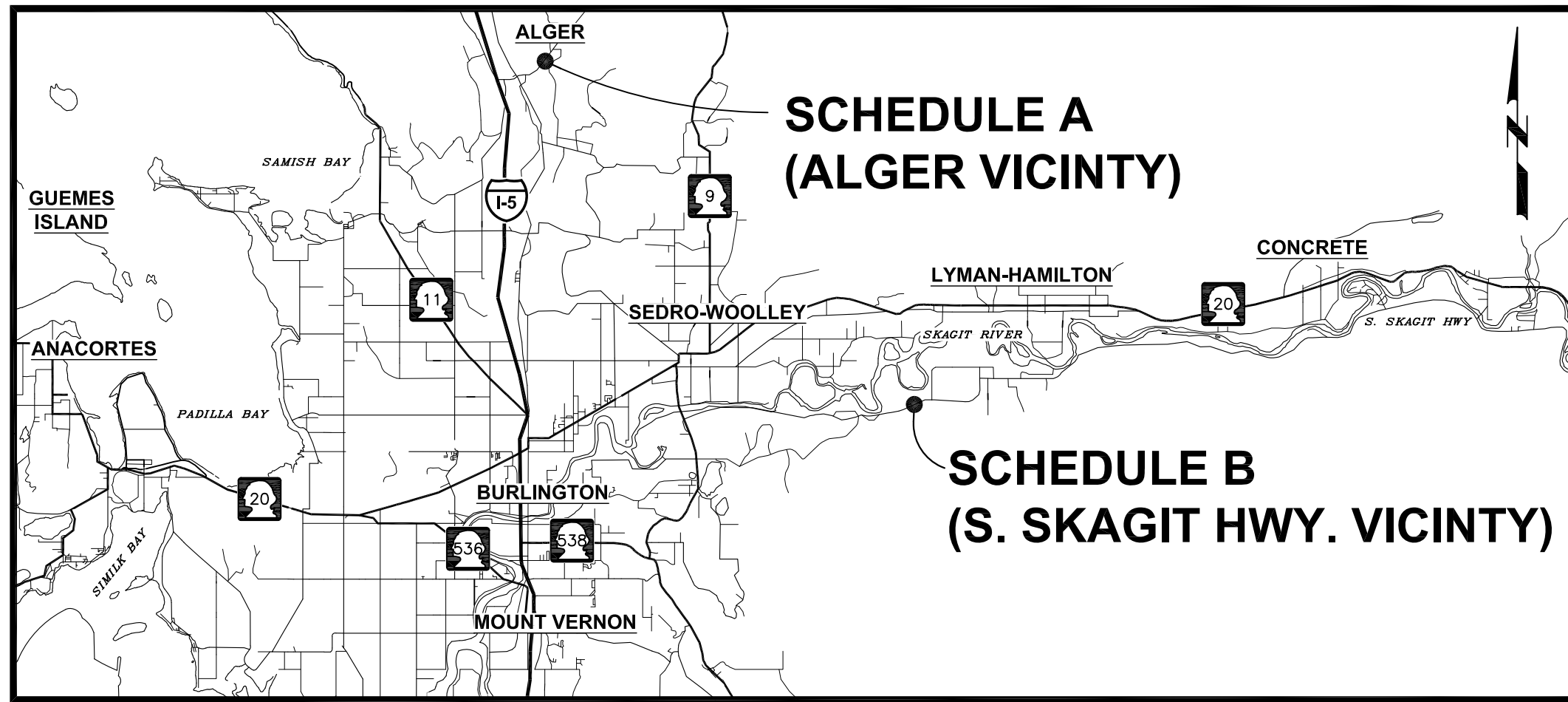
ACTIVE WARNING SIGNS

ES53540-5

FEDERAL AID NO.: HSIP-000S(515)

**SKAGIT COUNTY
PUBLIC WORKS**

1800 CONTINENTAL PLACE
MOUNT VERNON, WA 98273-9625
(360) 416-1400 FAX (360) 416-1405



SUMMARY OF QUANTITIES				
SCHEDULE A: ALGER CAIN LAKE RD				
Item No	Spec.	Qty.	Unit	Item Description
A1	1-09.7	1	LS	MOBILIZATION
A2	1-07.15(1)	1	LS	SPCC PLAN
A3	1-09.6 SP	EST	DOL	UNANTICIPATED UNDERGROUND CONFLICTS
A4	1-10.5(2)	1	LS	PROJECT TEMPORARY TRAFFIC CONTROL
A5	1-10.5(2)	16	HR	FLAGGERS
A6	1-10.5(2)	1	LS	TRAFFIC CONTROL SUPERVISOR
A7	8-01 SP	1	LS	TEMPORARY EROSION AND SEDIMENT CONTROL
A8	2-11.5	1	LS	TRIMMING AND CLEANUP
A9	9-28 SP	2	EA	EXPLANATORY SIGNS
A10	9-28.15 SP	4	EA	TEMPERATURE SENSITIVE SENSOR
SCHEDULE B: S. SKAGIT HWY.				
B1	1-09.7	1	LS	MOBILIZATION
B2	1-07.15(1)	1	LS	SPCC PLAN
B3	1-09.6 SP	EST	DOL	UNANTICIPATED UNDERGROUND CONFLICTS
B4	1-10.5(2)	1	LS	PROJECT TEMPORARY TRAFFIC CONTROL
B5	1-10.5(2)	16	HR	FLAGGERS
B6	1-10.5(2)	1	LS	TRAFFIC CONTROL SUPERVISOR
B7	8-01 SP	1	LS	TEMPORARY EROSION AND SEDIMENT CONTROL
B8	2-11.5	1	LS	TRIMMING AND CLEANUP
B9	9-28 SP	2	EA	EXPLANATORY SIGNS
B10	9-28.15 SP	6	EA	TEMPERATURE SENSITIVE SENSOR



SKAGIT COUNTY OFFICIALS

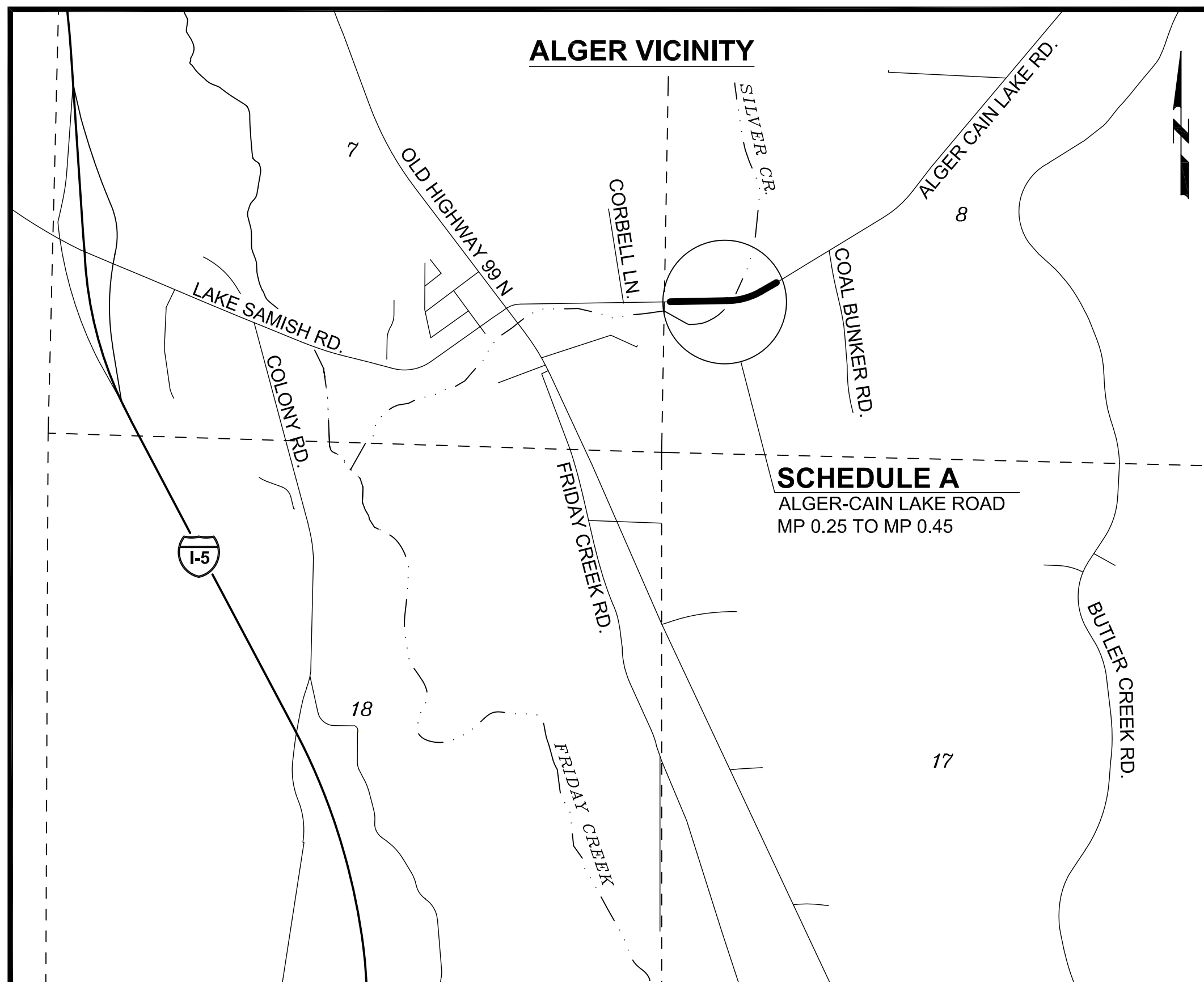
- BOARD OF COMMISSIONERS
- PETER BROWNING, CHAIR
 - RON WESEN, COMMISSIONER
 - LISA JANICKI, COMMISSIONER

[Signature] 05/16/22
GRACE K. KANE, P.E., PUBLIC WORKS DIRECTOR/COUNTY ENGINEER DATE

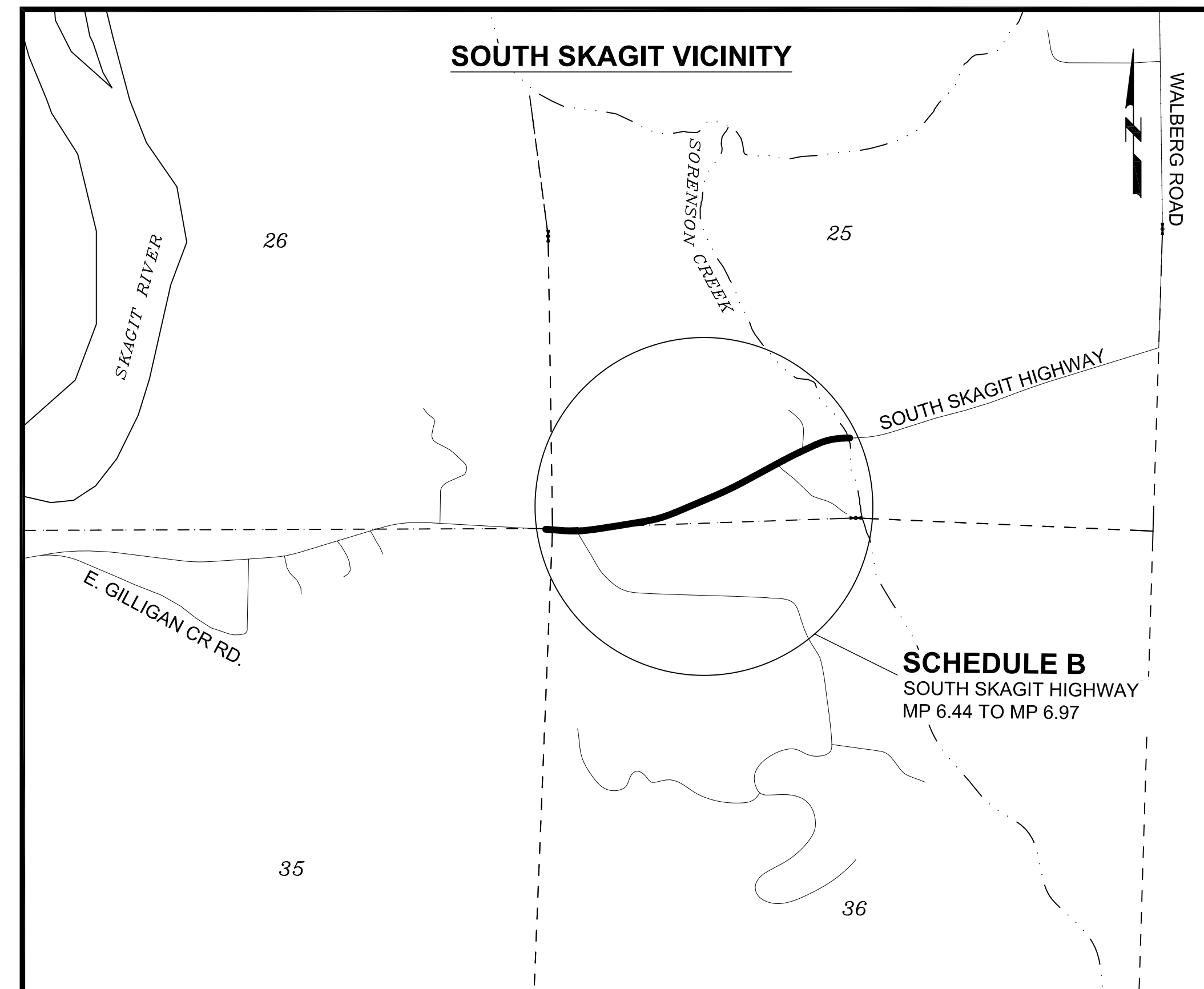
PLAN SHEET INDEX	
SHEET	TITLE
1	COVER, VICINITY, LEGEND, SUMMARY OF QUANTITIES
2	SIGNING PLAN, TYPICAL ROAD SECTION, SIGN SCHEDULE
3	WZTC SHOULDER CLOSURE - LOW SPEED
4	WZTC SHOULDER CLOSURE - HIGH SPEED

NO.	REVISIONS	DATE

T. 36 N. R.4 E.

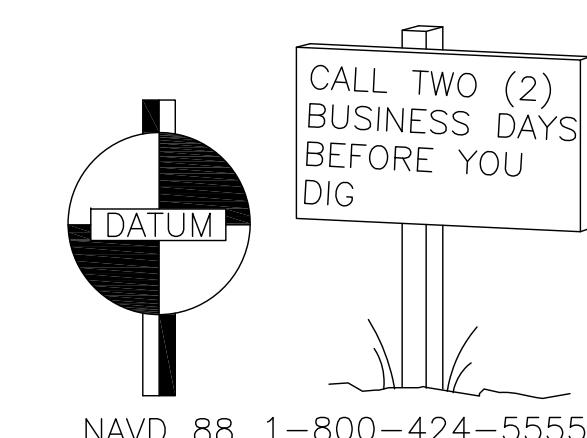


T. 35 N. R.5 E.



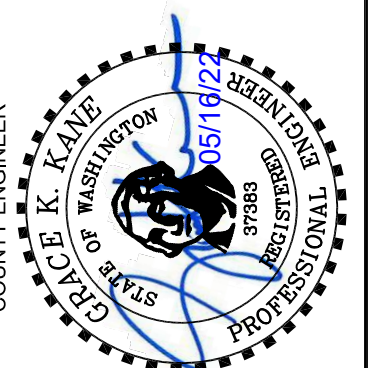
LEGEND

- PROJECT SITE
- ROAD
- RIVER/LAKE
- CREEK
- SECTION LINES
- SECTION NUMBER



NAVD 88 1-800-424-5555

VICINITY MAP NTS

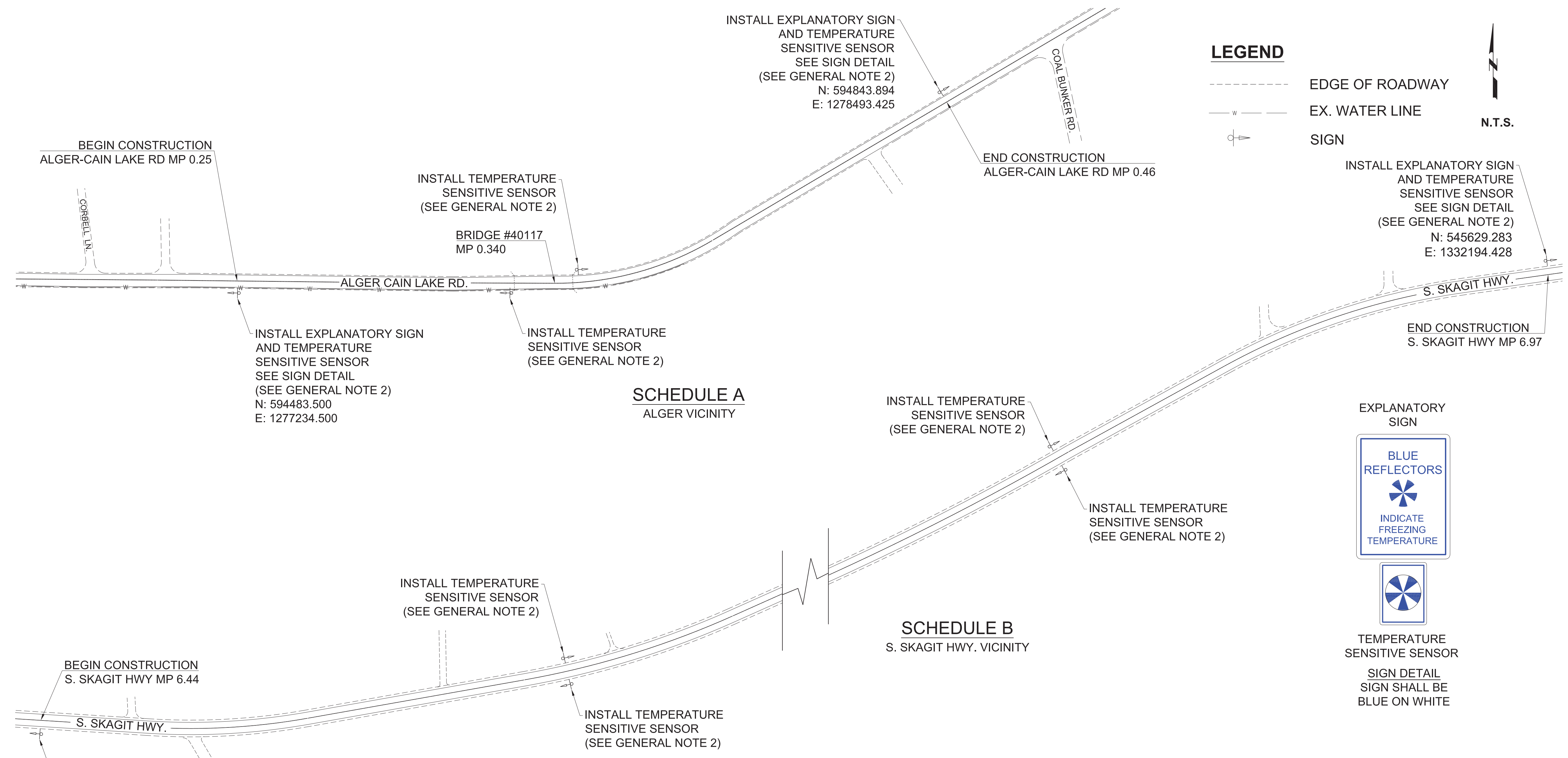


PROJECT NO.: ES53540-5	DESIGNED BY: JAS	DRAWN BY: JAS
FED. AID NO.: HSIP-000S(515)	CHECKED BY: GKK	APPROVED BY: GKK
PROJECT LOCATED NEAR: SKAGIT COUNTY	SECTION 25, 26, 35, 36, T.35N.R.5E SECTION 07, 08, 17, 18, T.36N. R.4E	

WARNING SIGNS
COVERSHEET
VICINITY MAP AND SUMMARY OF QUANTITIES

1 INCH SCALE BAR
ADJUST SCALE ACCORDINGLY

SHEET
1 OF 4



LEGEND

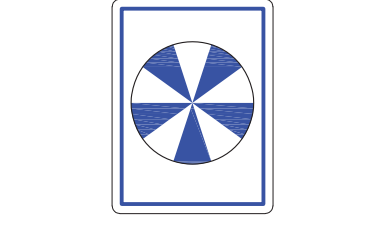
- EDGE OF ROADWAY
- - - - - EX. WATER LINE
- ⊙ SIGN



SCHEDULE A
ALGER VICINITY

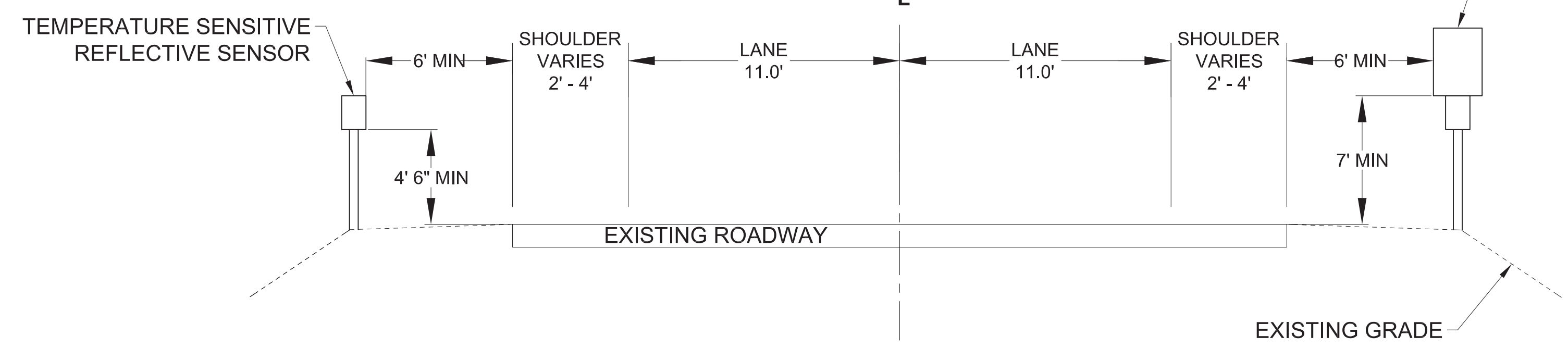
SCHEDULE B
S. SKAGIT HWY. VICINITY

EXPLANATORY SIGN



TEMPERATURE SENSITIVE SENSOR
SIGN DETAIL SIGN SHALL BE BLUE ON WHITE

SIGN SCHEDULE		
SCHEDULE A - ALGER CAIN LAKE RD		
EXPLANATORY SIGN	18"X24"	2
SENSOR	7"X10"	4
SCHEDULE B - S. SKAGIT HWY		
EXPLANATORY SIGN	18"X24"	2
SENSOR	7"X10"	6



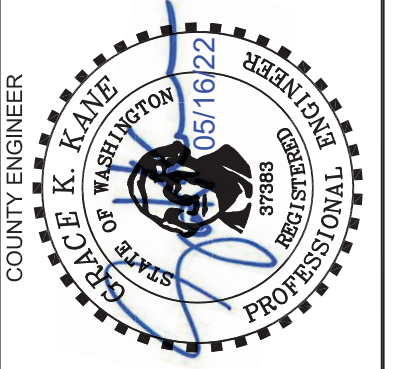
TYPICAL ROAD SECTION
NOT TO SCALE

GENERAL NOTES

- 1) FOR SIGN INSTALLATION LOCATION REQUIREMENTS SEE WSDOT STANDARD PLAN G-20.10-02 (GROUND-MOUNTED SIGN PLACEMENT).
- 2) LOCATION TO BE VERIFIED BY FIELD INSPECTOR.

SKAGIT COUNTY PUBLIC WORKS
1800 CONTINENTAL PLACE
MOUNT VERNON, WA 98273-5625
(360) 416-1400 FAX (360) 416-1405

NO.	REVISIONS	DATE



PROJECT NO.: ES53540-5
FED. AID NO.: HSP-0005(G15)
DESIGNED BY: JAS DRAWN BY: JAS
CHECKED BY: GKK APPROVED BY: GKK
PROJECT LOCATED NEAR:
SKAGIT COUNTY, WA
T:360.R.4E.S87.T.35.R.5E.S35 & S25

WARNING SIGNS
SIGNING PLAN, SIGN DETAILS AND TYPICAL ROAD SECTION

1 INCH SCALE BAR
ADJUST SCALE ACCORDINGLY

SIGN SPACING = X (1)		
RURAL ROADS & URBAN ARTERIALS	35 / 40 MPH	350' ±
RURAL ROADS, URBAN ARTERIALS, RESIDENTIAL & BUSINESS DISTRICTS	25 / 30 MPH	200' ± (2)
URBAN STREETS	25 MPH OR LESS	100' ± (2)

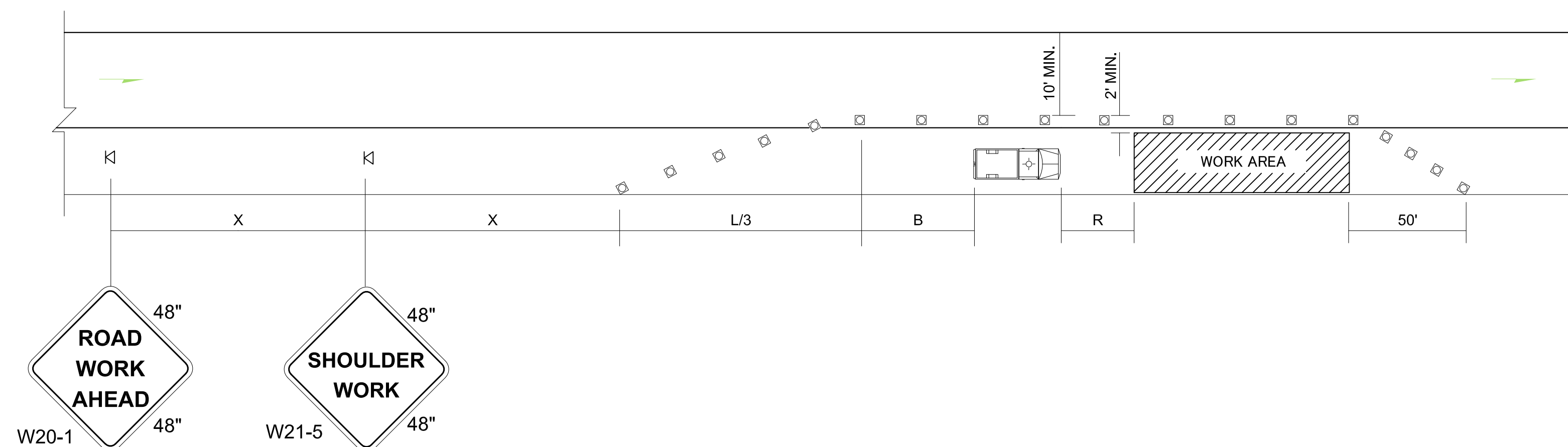
(1) ALL SPACING MAY BE ADJUSTED TO ACCOMMODATE INTERSECTIONS AND DRIVEWAYS.
(2) THIS SPACING MAY BE REDUCED IN URBAN AREAS TO FIT ROADWAY CONDITIONS.

MINIMUM SHOULDER TAPER LENGTH = L/3 (feet)										
SHOULDER WIDTH (feet)	Posted Speed (mph)									
	25	30	35	40	45	50	55	60	65	70
8'	40	40	60	90	-	-	-	-	-	-
10'	40	60	90	90	-	-	-	-	-	-

USE A 3 DEVICES TAPER FOR SHOULDERS LESS THEN 8'

BUFFER DATA											
LONGITUDINAL BUFFER SPACE = B											
SPEED (MPH)	25	30	35	40	45	50	55	60	65	70	
LENGTH (feet)	155	200	250	305	360	425	495	570	645	730	
TRANSPORTABLE ATTENUATOR ROLL AHEAD DISTANCE = R											
HOST VEHICLE WEIGHT 9,900 TO 22,000 lbs.						HOST VEHICLE WEIGHT > 22,000 lbs.					
< 45 MPH	45-55 MPH	> 55 MPH				< 45 MPH	45-55 MPH	> 55 MPH			
100'	123'	172'				74'	100'	150'			
PROTECTIVE VEHICLE (WORK VEHICLE) = R											
NO SPECIFIED DISTANCE REQUIRED											

CHANNELIZATION DEVICE SPACING (feet)		
MPH	TAPER	TANGENT
35/40	30	60
25/30	20	40



LEGEND	
K	TEMPORARY SIGN LOCATION
□	CHANNELIZING DEVICES
	PROTECTIVE VEHICLE

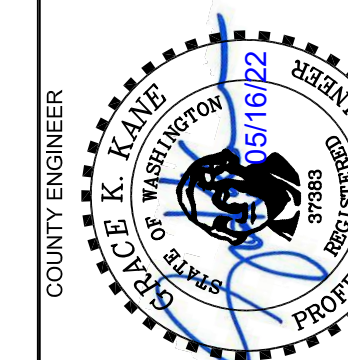
SHOULDER CLOSURE - LOW SPEED (40 MPH OR LESS)

NOT TO SCALE

NOTES

1. DEVICE SPACING FOR THE DOWNSTREAM TAPER SHALL BE 20' (FT) O.C.
2. ALL SIGNS ARE BLACK ON ORANGE.

**SKAGIT COUNTY
PUBLIC WORKS**
1800 CONTINENTAL PLACE
MOUNT VERNON, WA 98273-5625
(360) 416-1400 FAX (360) 416-1405



PROJECT NO.: ES53540-5
FED. AID NO.: HSIP-0005(515)
DESIGNED BY: JAS
DRAWN BY: JAS
CHECKED BY: GKK
APPROVED BY: GKK
PROJECT LOCATED NEAR:
SKAGIT COUNTY
T:38N R:4E S8 / T:35 R:5E S35 & S25

WARNING SIGNS
SHOULDER CLOSURE - LOW SPEED WORK
ZONE TRAFFIC CONTROL

1 INCH SCALE BAR
ADJUST SCALE ACCORDINGLY
SHEET
3 OF 4

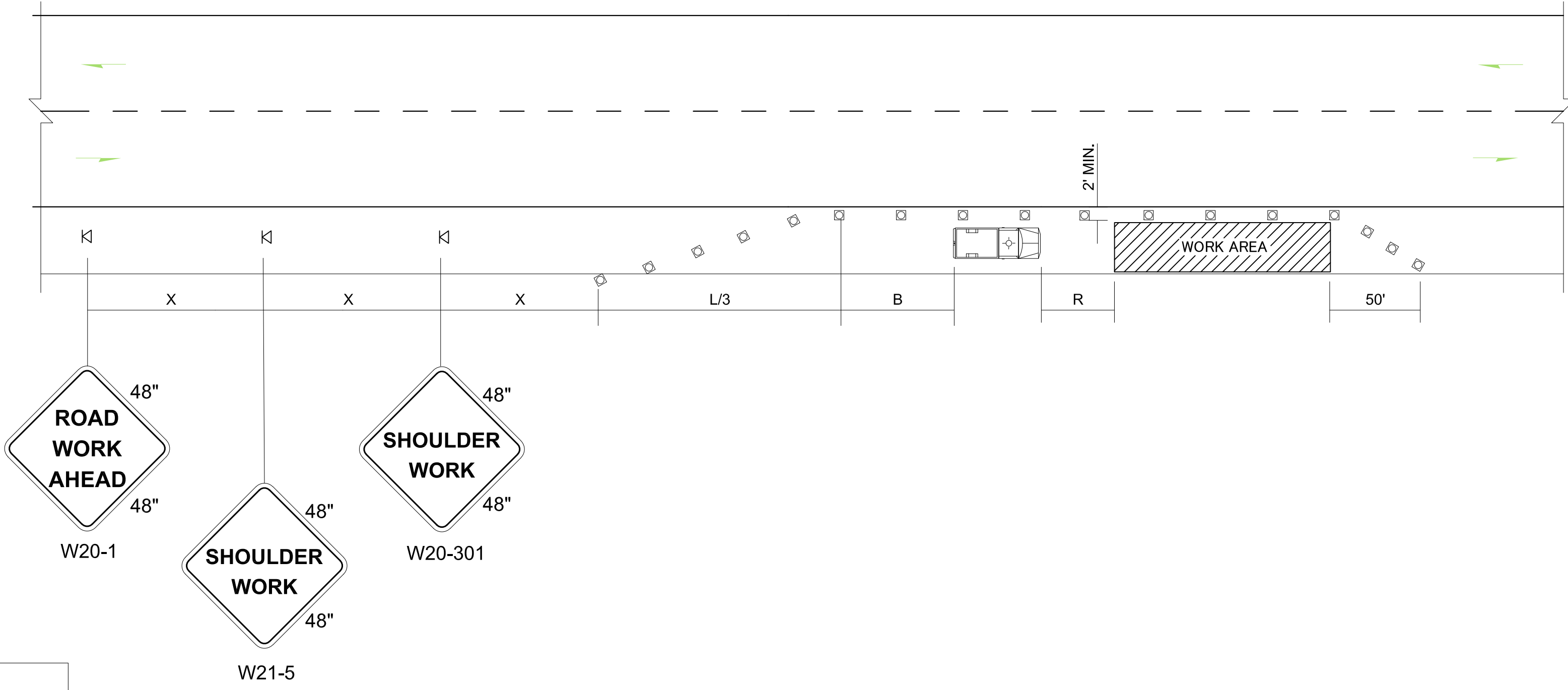
SIGN SPACING = X (1)		
RURAL ROADS & URBAN ARTERIALS	35 / 40 MPH	350' ±
RURAL ROADS, URBAN ARTERIALS, RESIDENTIAL & BUSINESS DISTRICTS	25 / 30 MPH	200' ± (2)
URBAN STREETS	25 MPH OR LESS	100' ± (2)

(1) ALL SPACING MAY BE ADJUSTED TO ACCOMMODATE INTERSECTIONS AND DRIVEWAYS.
 (2) THIS SPACING MAY BE REDUCED IN URBAN AREAS TO FIT ROADWAY CONDITIONS.

MINIMUM SHOULDER TAPER LENGTH = L/3 (feet)										
SHOULDER WIDTH (feet)	Posted Speed (mph)									
	25	30	35	40	45	50	55	60	65	70
8'	40	40	60	90	—	—	—	—	—	—
10'	40	60	90	90	—	—	—	—	—	—

USE A 3 DEVICES TAPER FOR SHOULDERS LESS THEN 8'

BUFFER DATA											
LONGITUDINAL BUFFER SPACE = B											
SPEED (MPH)	25	30	35	40	45	50	55	60	65	70	
LENGTH (feet)	155	200	250	305	360	425	495	570	645	730	
TRANSPORTABLE ATTENUATOR ROLL AHEAD DISTANCE = R											
HOST VEHICLE WEIGHT 9,900 TO 22,000 lbs.						HOST VEHICLE WEIGHT > 22,000 lbs.					
< 45 MPH	45-55 MPH	> 55 MPH		< 45 MPH	45-55 MPH	> 55 MPH					
100'	123'	172'		74'	100'	150'					
PROTECTIVE VEHICLE (WORK VEHICLE) = R											
NO SPECIFIED DISTANCE REQUIRED											



CHANNELIZATION DEVICE SPACING (feet)		
MPH	TAPER	TANGENT
35/40	30	60
25/30	20	40

LEGEND

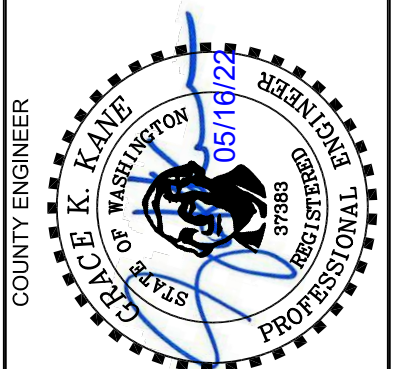
- K TEMPORARY SIGN LOCATION
- CHANNELIZING DEVICES
- PROTECTIVE VEHICLE

SHOULDER CLOSURE - HIGH SPEED
NOT TO SCALE

- NOTES**
- NO ENCROACHMENT IN TRAVELED LANE. IF ENCROACHMENT IS NECESSARY, LANE SHALL BE CLOSED.
 - DEVICE SPACING FOR THE DOWNSTREAM TAPER SHALL BE 20' (FT) O.C.
 - ALL SIGNS ARE BLACK ON ORANGE.

SKAGIT COUNTY PUBLIC WORKS
1800 CONTINENTAL PLACE
MOUNT VERNON, WA 98273-5625
(360) 416-1400 FAX (360) 416-1405

NO.	REVISIONS	DATE



PROJECT NO.: ES53540-5	DRAWN BY: JAS
FED. AID NO.: HSIP-0005(515)	CHECKED BY: GKK
DESIGNED BY: JAS	APPROVED BY: GKK
CHECKED BY: GKK	PROJECT LOCATED NEAR: SKAGIT COUNTY
T:38N R:4E S8 / T:35 R:5E S35 & S25	

WARNING SIGNS
SHOULDER CLOSURE - LOW SPEED WORK
ZONE TRAFFIC CONTROL